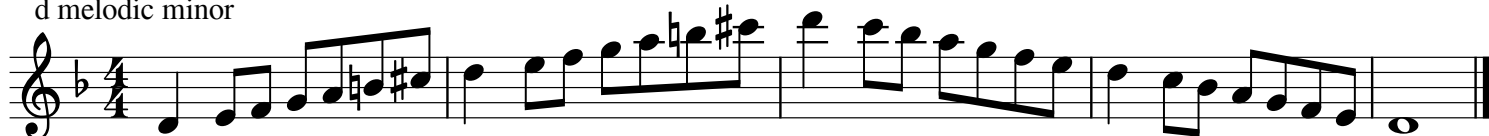


# Clarinet Melodic Minor Scales

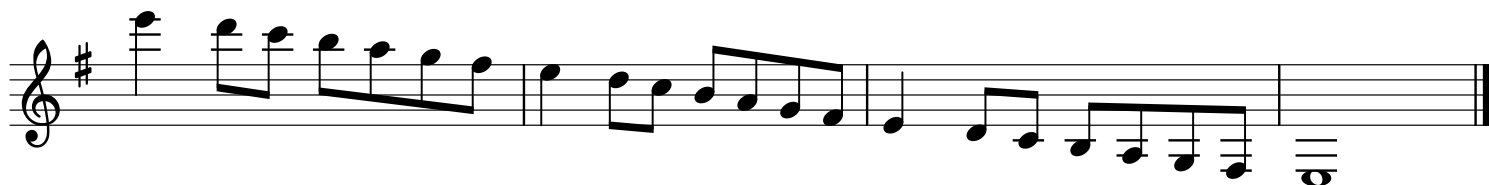
a melodic minor



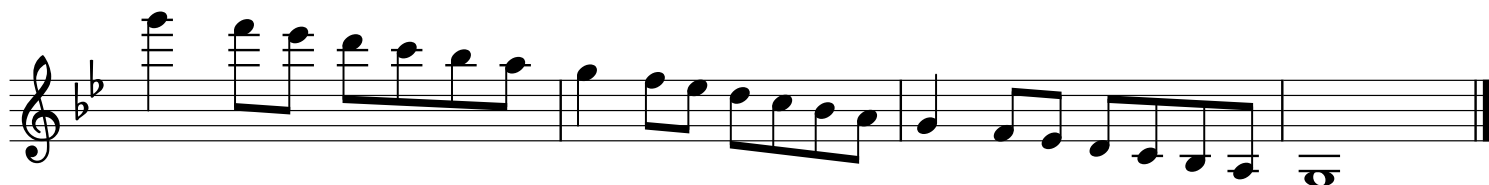
d melodic minor



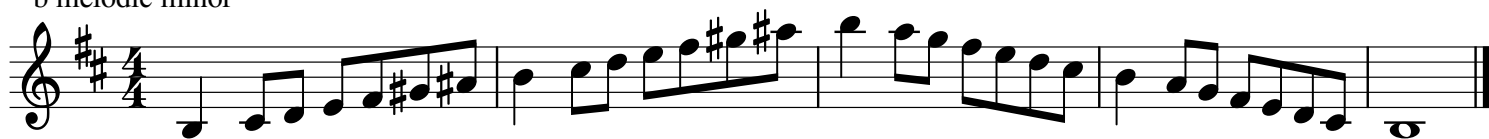
e melodic minor



g melodic minor



b melodic minor



c melodic minor



f# melodic minor

Two staves of musical notation for the f# melodic minor scale in 4/4 time. The first staff shows the ascending scale: F#4, G4, A4, B4, C#5, D5, E5, F#5. The second staff shows the descending scale: F#5, E5, D5, C#5, B4, A4, G4, F#4. The key signature has two sharps (F# and C#) and the time signature is 4/4.

f melodic minor

Two staves of musical notation for the f melodic minor scale in 4/4 time. The first staff shows the ascending scale: F4, G4, A4, Bb4, Cb5, D5, E5, F5. The second staff shows the descending scale: F5, E5, D5, Cb5, Bb4, A4, G4, F4. The key signature has two flats (Bb and Eb) and the time signature is 4/4.

c# melodic minor

Two staves of musical notation for the c# melodic minor scale in 4/4 time. The first staff shows the ascending scale: C#4, D4, E4, F#4, G#4, A4, B4, C#5. The second staff shows the descending scale: C#5, B4, A4, G#4, F#4, E4, D4, C#4. The key signature has three sharps (F#, C#, G#) and the time signature is 4/4.

bb melodic minor

Two staves of musical notation for the bb melodic minor scale in 4/4 time. The first staff shows the ascending scale: Bb4, Cb4, D4, Eb4, Fb4, Gb4, Ab4, Bb5. The second staff shows the descending scale: Bb5, Ab4, Gb4, Fb4, Eb4, Cb4, Bb4, Bb4. The key signature has four flats (Bb, Eb, Ab, Db) and the time signature is 4/4.

g# melodic minor

Two staves of musical notation for the g# melodic minor scale in 4/4 time. The first staff shows the ascending scale: G#4, A4, B4, C#4, D#4, E4, F#4, G#5. The second staff shows the descending scale: G#5, F#4, E4, D#4, C#4, B4, A4, G#4. The key signature has four sharps (F#, C#, G#, D#) and the time signature is 4/4.

eb melodic minor

Two staves of musical notation for the eb melodic minor scale in 4/4 time. The first staff shows the ascending scale: Eb4, Fb4, Gb4, Ab4, Bb4, Cb4, Db4, Eb5. The second staff shows the descending scale: Eb5, Db4, Cb4, Bb4, Ab4, Gb4, Fb4, Eb4. The key signature has five flats (Bb, Eb, Ab, Db, Gb) and the time signature is 4/4.