

# Clarinet Melodic Minor Scales

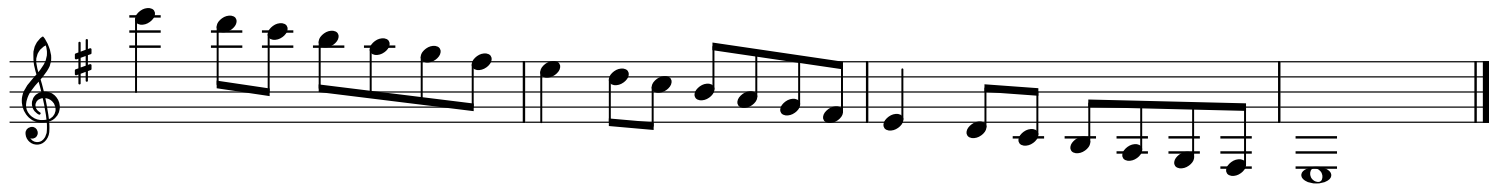
a natural minor



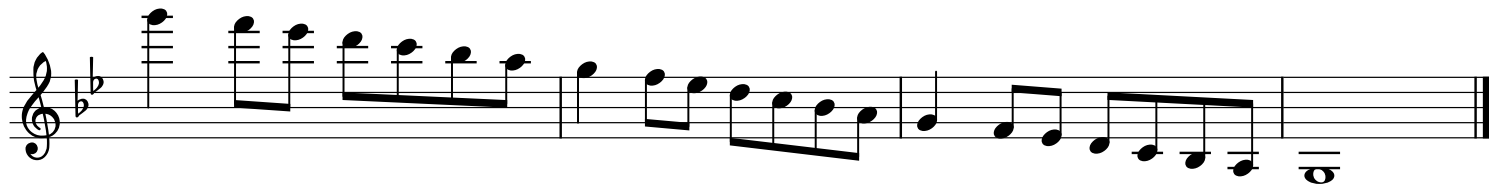
d natural minor



e natural minor



g natural minor



b natural minor



c natural minor



f# natural minor

Two staves of musical notation for the f# natural minor scale in 4/4 time. The first staff shows the ascending scale: F#4, G4, A4, B4, C5, D5, E5, F#5. The second staff shows the descending scale: F#5, E5, D5, C5, B4, A4, G4, F#4. The key signature has two sharps (F# and C#) and the time signature is 4/4.

f natural minor

Two staves of musical notation for the f natural minor scale in 4/4 time. The first staff shows the ascending scale: F4, G4, A4, B4, C5, D5, E5, F5. The second staff shows the descending scale: F5, E5, D5, C5, B4, A4, G4, F4. The key signature has two flats (Bb and Eb) and the time signature is 4/4.

c# natural minor

Two staves of musical notation for the c# natural minor scale in 4/4 time. The first staff shows the ascending scale: C#4, D4, E4, F#4, G4, A4, B4, C#5. The second staff shows the descending scale: C#5, B4, A4, G4, F#4, E4, D4, C#4. The key signature has three sharps (F#, C#, and G#) and the time signature is 4/4.

bb natural minor

Two staves of musical notation for the bb natural minor scale in 4/4 time. The first staff shows the ascending scale: Bb4, Cb4, Db4, Eb4, Fb4, Gb4, Ab4, Bb5. The second staff shows the descending scale: Bb5, Ab4, Gb4, Fb4, Eb4, Db4, Cb4, Bb4. The key signature has four flats (Bb, Eb, Ab, and Db) and the time signature is 4/4.

g# natural minor

Two staves of musical notation for the g# natural minor scale in 4/4 time. The first staff shows the ascending scale: G#4, A4, B4, C#4, D4, E4, F#4, G#5. The second staff shows the descending scale: G#5, F#4, E4, D4, C#4, B4, A4, G#4. The key signature has four sharps (F#, C#, G#, and D#) and the time signature is 4/4.

eb natural minor

Two staves of musical notation for the eb natural minor scale in 4/4 time. The first staff shows the ascending scale: Eb4, Fb4, Gb4, Ab4, Bb4, Cb4, Db4, Eb5. The second staff shows the descending scale: Eb5, Db4, Cb4, Bb4, Ab4, Gb4, Fb4, Eb4. The key signature has five flats (Bb, Eb, Ab, Db, and Gb) and the time signature is 4/4.